

# Components in the Preview Site

---

## Exactly the Same Functionality as Current LWeb

Column Control

Horizontal Rule

Section Heading

List Component is now List Child Pages but has the same functionality

Table Component

Display External RSS Feed

## \* How does the new responsive design impact the components and the site?

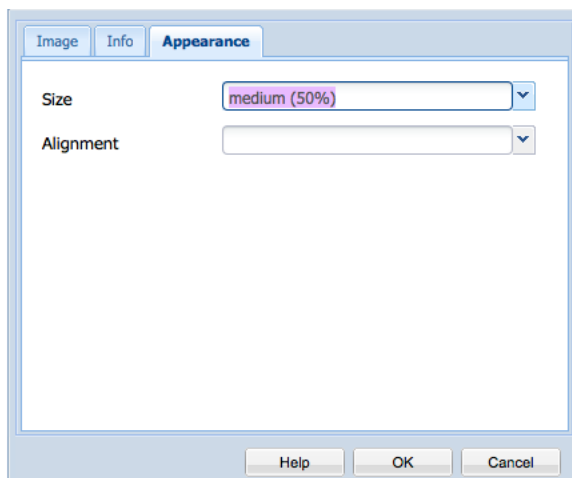
Implementing **responsive design** means images *must* be assigned a percentage-based size to ensure they resize appropriately to fit a variety of screens. If an image is assigned a specific size in pixels, it will remain that exact size whether viewed on a mobile phone or a tablet or a desktop monitor. A percentage size will resize proportionally to the device. We have updated appropriate components to accommodate our new responsive design.

We have also created some new components to allow you new functionality. New component development and component enhancements will resume later this summer or in the fall depending on other development priorities and tasks. We have a number of these planned.

## Updated & New Components \*

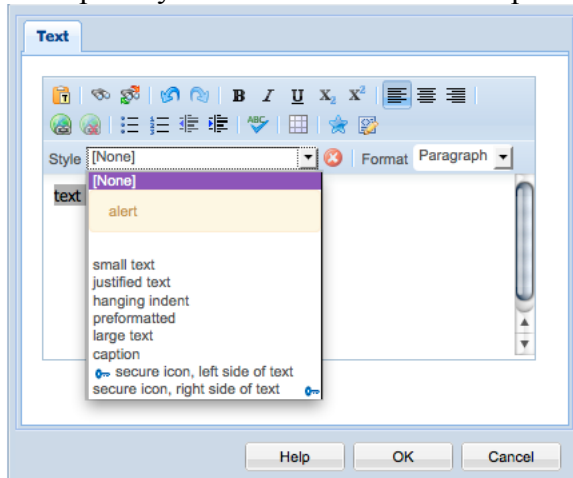
### Image Component

Rather than enter a specific pixel size, you will select a size for your image from the “Size” drop-down menu in the “Appearance” tab. The image will then resize appropriately within our new, responsive design (e.g., if someone views your page on their iPad, the image will resize accordingly)\*.



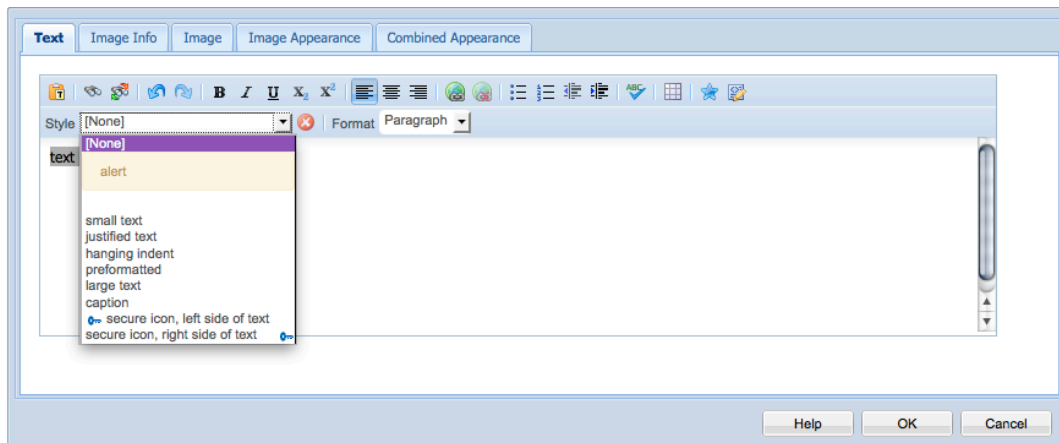
## Text Component

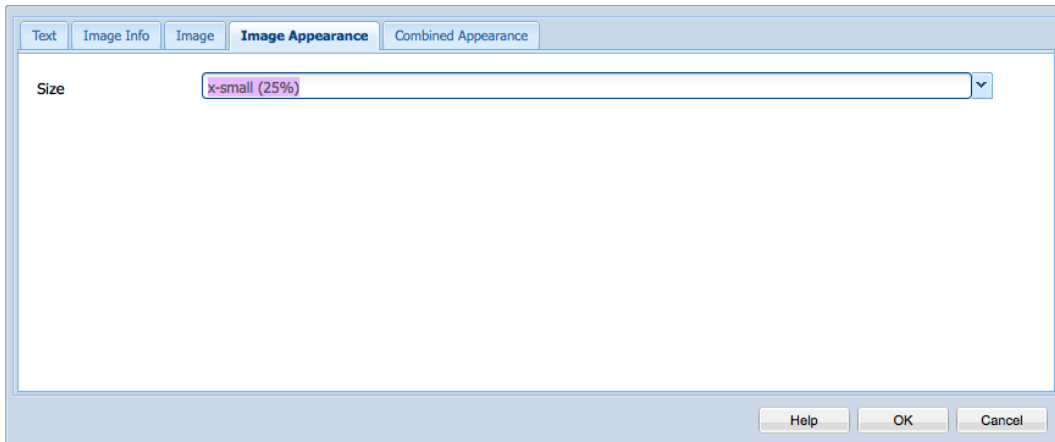
Styles have changed. CSS work is not yet complete, so your styles won't look different (you can select them, however, and they will be applied when we update the CSS). We will update you once that has been completed.



## Text & Image Component

Styles have been updated the same way that they were in the Text component, and the Appearance tab offers the new options for size selection for your images. Select the size that is appropriate for your image and layout. The percentage and proportions will remain the same when that information is resized in response to a different screen size.



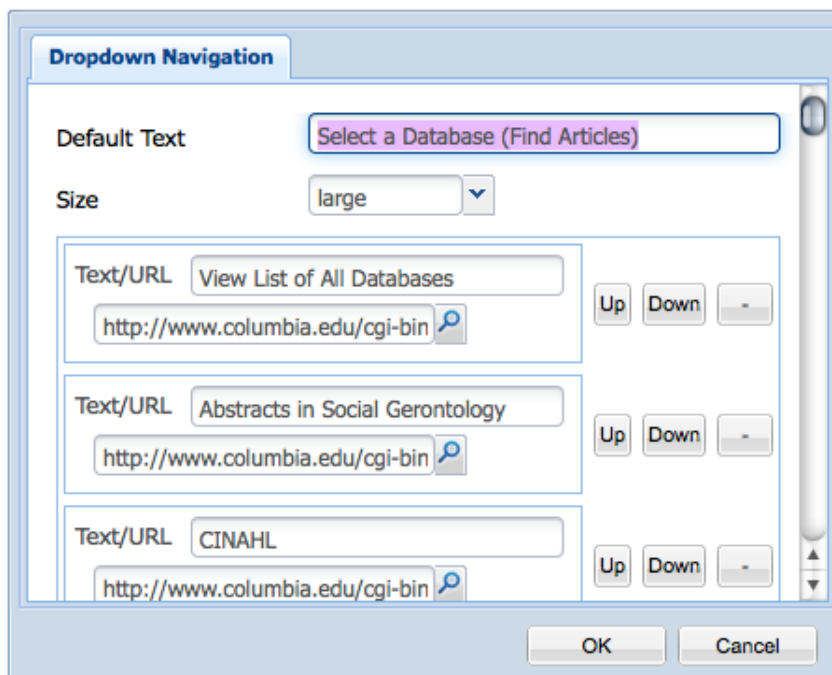


### Dropdown Navigation Component

The drop-down navigation component replaces any drop-down navigation menus in the site (NOTE: this component is only for navigation, not for form menus). You can update the drop-down menus by entering the Link Text and the URL (**Internal Libraries' Website URLs** MUST be navigated to using the magnifying glass, and **external URLs** MUST be copied and pasted into the URL field). The Default Text appears in the Dropdown Box (see below). Use a Section Heading above the list to provide users with a longer, more descriptive title when needed.

## RECOMMENDED DATABASES FOR SOCIAL WORK RESEARCH

Select a Database (Find Articles) ▼



## List Links Component

Similar in functionality to the Dropdown Navigation Component, this component allows you to mix internal and external links (Labeled Links Tab) in a bulleted or non-bulleted list (Appearance Tab).

The screenshot shows the 'Labeled Links' configuration window with the 'Labeled Links' tab selected. It contains three rows of link entries. Each row has a 'Label / URL' field, a 'New window' checkbox, and 'Up', 'Down', and '-' buttons. The entries are:

- Label / URL: EBSCOhost Research Databases | http://www.columbia.edu/cgi-bin |  New window | Up | Down | -
- Label / URL: Resources for Graduate Students | /content/libraryweb/services/grad |  New window | Up | Down | -
- Label / URL: NOAA: National Oceanic & Atmosph | http://www.noaa.gov/ |  New window | Up | Down | -

At the bottom right of the main area is a '+' button. At the bottom of the window are 'OK' and 'Cancel' buttons.

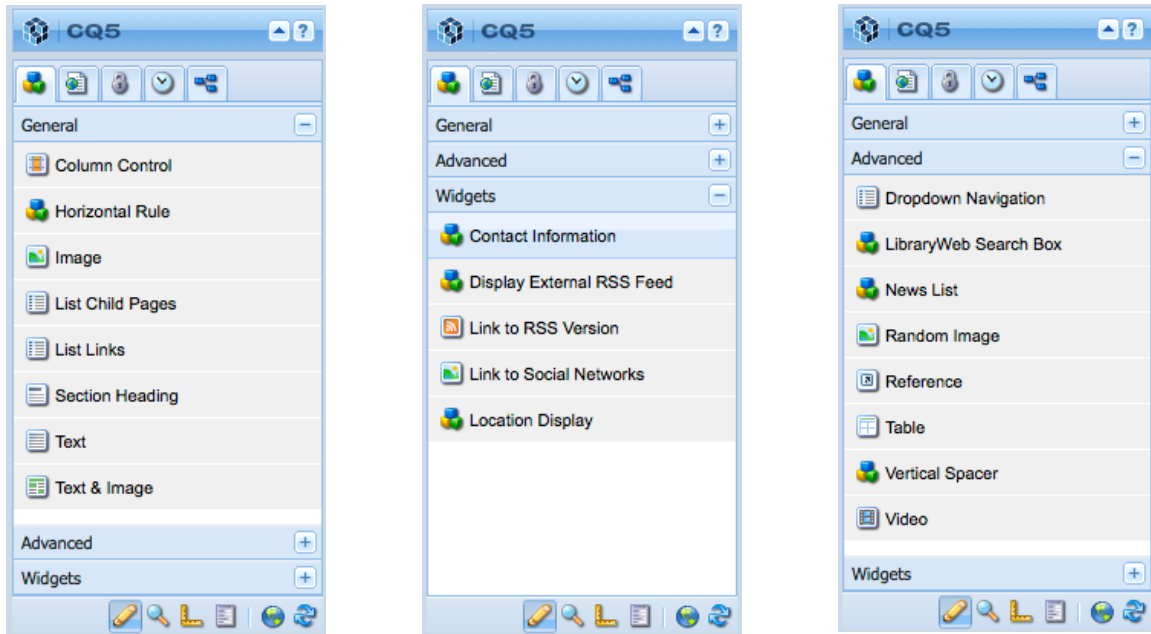
The screenshot shows the 'Labeled Links' configuration window with the 'Appearance' tab selected. It contains two dropdown menus:

- Labeled List Style: Bulleted List
- Line Spacing: default

At the bottom of the window are 'OK' and 'Cancel' buttons.

## The Sidekick

**The Sidekick** has been updated and rearranged, to accommodate new components and planned development work. The new sections are labeled **General**, **Advanced**, and **Widgets** with appropriate component sets in each section. See a screen shot of each section of the new sidekick on the following page.



## Where's My Stuff?

---

There is a new Information Architecture in place in the new site, and everything is in a new place. The Information Architecture mostly mirrors the menu and navigation structure of the site. **Please attend a contributor session for more individualized assistance with finding your pages.**

### \*NEW Sections

- \* **Computing & Technology** pulls together our computing and technology information.
- \* **Find** incorporates Catalogs, Digital Collections, Online Exhibitions, E-Resources, Course Reserves, and other materials patrons might need to locate.
- \* **Locations** is where **most** of the “indiv” library pages are now located.
- \* **Research Support** houses Ask a Librarian, Directory of Subject Specialists, Tutorials, Workshops, Citation Management, and Research & Reference Help.
- **Search** – our search page
- \* **Services** replaces Using the Libraries, and houses LIO, Preservation (Digitization Services), Study Spaces, new pages for Faculty and Graduate Student Services, Undergraduate Services, Access, Borrowing, Disability Services, Library Lockers...
- \* **Subject Guides** has some of the content that used to be in “indiv”. We want to have all of our subject guides in one place (this will help with the RTI /Database transition to CLIOBeta, as well as with other additional functionality that we will be adding as we move to a more flexible template per the input of Reference Coordinating Committee).